

*Celebrating a life of creativity
and devotion
to peace and beauty...*



**JOSEPH HENRY WYTHE
MEMORIAL SERVICE**

*Thursday, October 24, 2019 7:00 p.m.
Sandpoint Senior Center
820 Main Street
Sandpoint, Idaho 83864*



The Service

Cello tribute by Mika Hood

Short prayer by the Wythe Family

Tributes to Joseph Henry Wythe and meditations on his life
by the congregation.

In the traditional Quaker (Friends) prayer service,
the congregants meditate in silence until someone is moved
by the Spirit to share the Light within them.
After a brief prayer, we will follow that tradition, sharing our
experiences and memories of Joe, and meditations on his life.

We ask only that those who are moved to speak respect
the spirit of the occasion and those who have come to honor Joe,
and we ask God's blessing on all who join us today.

*In order to give time to all who wish to speak,
please limit your remarks to five minutes.*

Farewell. Stand and join hands in silent meditation.



Music: Selections from J.S. Bach, St. Matthew's Passion

Flowers: All Seasons Nursery, Sandpoint, Idaho

*The Wythe family expresses deep thanks to Joe's extended family of
The Friends Meeting (Quakers) of Sandpoint.*

*Without their love and help in this time, this service would not be
possible.*





Thoughts on Creativity, Architecture and Life

By J.H. Wythe

The religious experience of a Gothic cathedral is more of a feeling of wonder than of devotion to the divine. Those inspired master builders of medieval Europe gave life to their wondrous cathedrals. We respond naturally, not merely from a sense of duty.

Being in the presence of beauty can bring forth a variety of spontaneous responses ranging from reverent silence to shouts of joy, delight, rapture, ecstasy, song, dance, love. Our spirit is enlivened by the living nature of the environment in which we find ourselves. A sensitive architect will design living spaces for the various purposes to which our deepest feelings will naturally respond in harmony and be touched.

Soul responses are not confined to religious buildings or even dwellings. Indeed, the psyche responds positively to living architecture in classrooms, offices, factories, stores and the countless other places of human activities, including our towns and cities. We feel and function well in spaces that are designed to be spiritually alive, where the spaces are in natural and complete harmony with the souls of those who will encounter the spaces.

Conversely, consider the deadening effect of the grid systems of most cities, towns and the sectional patterns of the country sides. Individual identity is lost as thousands of ant-like workers file into huge, glitzy office blocks or dismal industrial plants, toiling from 9 to 5 at their regimented stations.

Even in the least of spaces, we are extremely sensitive to the qualities of the stimuli, not only visual but on the other senses as well. Radiant heat may be more comforting than forced air heating. The colors used for decorating have a profound effect on our moods and activities. The quality of light is equally important. Some people become quite uncomfortable on concrete floors and physically need the resilience of wood under foot. The ambiance of a space is largely due to the reverberation or absorption of sound. The feeling of well-being can be enhanced by scents and fragrances. Whether or not we actually touch the textures of wood, fabrics or other materials, we still feel them.

In addition, we are attuned to the inner reality of the spaces, where we instinctively understand what the place says to us. We "know" if we belong there or should back off... We are capable of picking up the most subtle nuances of the ambiance of spaces. If anything offends, we detect it immediately, even though we may not be able to identify what it is.

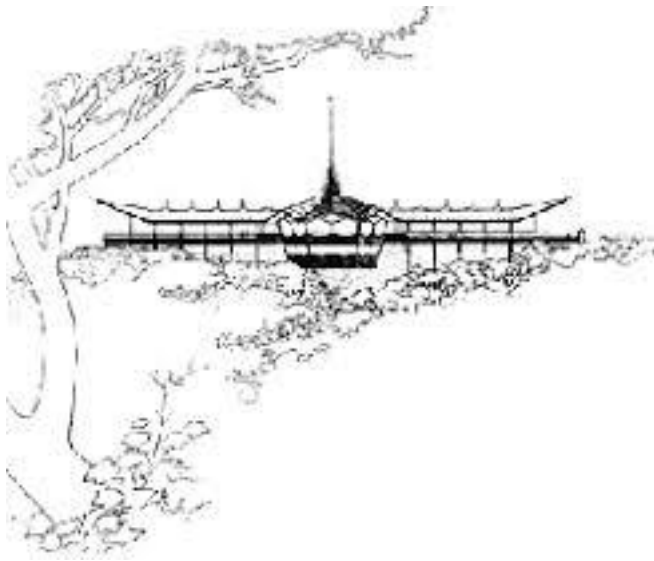
When all of these sensual aspects of a building are in harmony, it becomes a Work of Architecture; it has soul which nourishes and heals the human spirit. These places feel alive, and we respond with delight. Feelings stimulated by such places with soul are indeed healthy, both physiologically and psychologically.

True architecture is life-enhancing. To touch the souls of the people, it must have a soul of its own. No place of work, or study, or worship, or play, or any other human activity should be depressing in spirit. Our built environment must be in harmony with nature and the human essence; it must be uplifting to the entire community. The architecture of delight creates the necessary conditions for the joy of living. It is a tremendous responsibility for all design professionals to thoroughly understand the human psyche, to have a keen appreciation of beauty of all kinds, and to create Works of Architecture that will enhance the environment and all forms of life within.

<http://www.alternative-architect.com/soul.htm>



UNICORN FARM The studios of Alternative Architecture



JOSEPH HENRY WYTHE

With thanks to the *Monterey Peninsula Herald*

Joseph Henry Wythe, October 18, 1920 – September 30, 2019, was born in San Jose, California, to Joseph Hills Wythe and Elsie Twelker Wythe.

Wythe worked as a journeyman carpenter before starting his architectural studies at UC Berkeley, which were interrupted by World War II. During the War, he served on B-24 bombers based in Italy, and flew missions over Germany and southern Europe.

After the war, Wythe met Bruce Goff, and later Frank Lloyd Wright, two giants of modern American architecture. He did graduate work with Goff at the University of Oklahoma School of Architecture, considered by many as the world's finest architectural school at that time.

After finishing his studies in Oklahoma, he returned to California where he set up his architectural studio on the Monterey Peninsula. Wythe taught architecture at Monterey Peninsula College, and raised four children with his first wife, Elizabeth Wythe Herdan. Wythe sang with the Monterey Peninsula Choral Society, and the Carmel Bach Festival, and was instrumental in establishing the Monterey County Chapter of the American Civil Liberties Union, becoming its first president.

In 1977, Wythe and his second wife, Lois Renk, returned to her native state of Idaho to become part of the Sandpoint community. They were founding members of the Sandpoint Friends (Quaker) meeting, Pend Oreille Arts Council, Panhandle Environmental League, Farmers Market, and the Kinnikinnick Native Plants Society. He was a member of Sandpoint Rotary, and was involved in community action against the Sandpoint bypass.

Since meeting Goff and Wright, Wythe devoted his life to organic architecture. "Unicorn Farm," the Wythe home near Sandpoint, has been widely published as an example of organic architecture, and he wrote four books on the subject. His work was selected to be part of exhibitions titled "The Legacy of Frank Lloyd Wright," which toured Europe for several years.

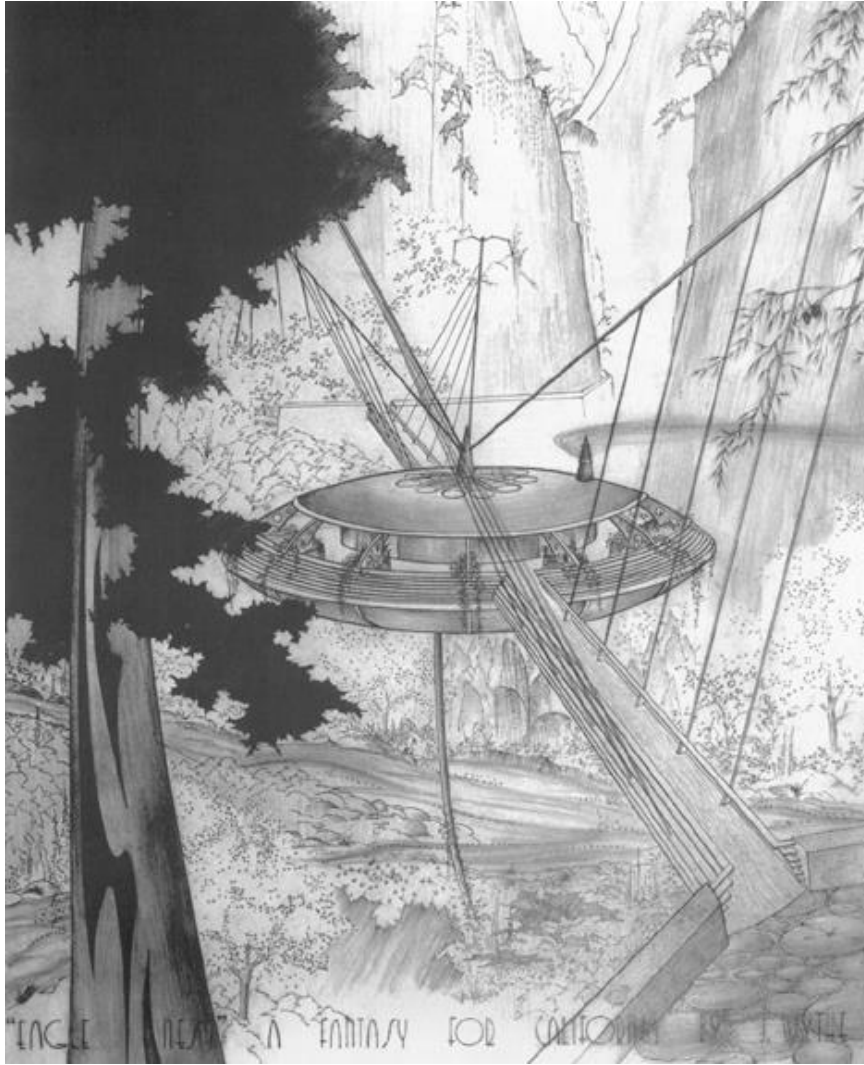
Joseph Wythe left us on September 30, 2019, and returned to the Architect of the Universe. Up to the end, he enjoyed excellent health, and his passing at The Bridge in Sandpoint was quick and without apparent pain or struggle. He was preceded in death by wife Lois Renk Wythe, brother John Wythe, and sister Martha Mosac. He is survived by sister Phyllis Karsten, son Joseph Henry Wythe, daughters Romi Elnagar and Luana Morris, nine grandchildren, and four great grandchildren.

His ashes will be scattered at Unicorn Farm to mingle with those of his beloved wife Lois.



Joseph Henry Wythe in his Pack River home next to photo albums from his days as a World War II B-24 tail gunner. The black-and-white photograph in the foreground is Wythe during the war. "It was not a good war, just a just war," said Wythe, who has since become a Quaker. (Photo by LEE HUGHES) *Bonner County Bee*





If you would like to be messaged when a **MEMORIAL SERVICE** focusing on Joe's architectural legacy is held, please leave your email address in the Guest Book on the front table, or write to us at montereypinegreen@yahoo.com.

If you wish to **ORDER** any of Joe's **BOOKS**, you may contact the publisher at <https://friendsofkebyar.com>.

Tax-deductible **DONATIONS IN JOE'S MEMORY** may be made to Sandpoint Friends Meeting. <http://www.sandpointquakers.org>





[sections for photo album]

Joseph Henry Wythe
1920 - 2019

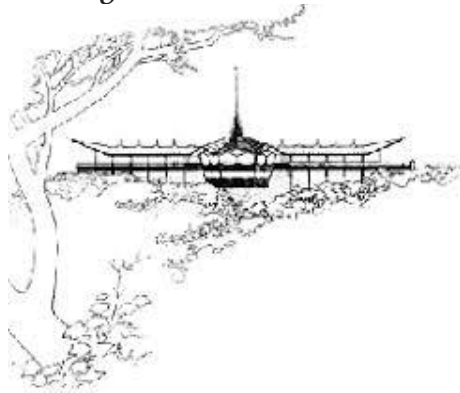
A Life Dedicated to Design and Beauty



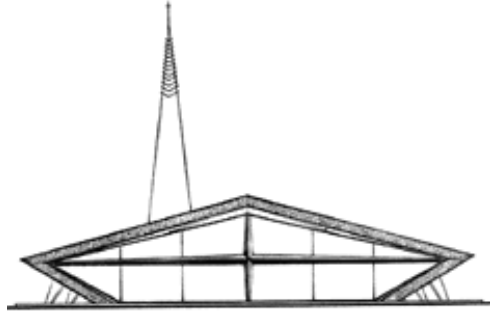
Family and Early Years



College



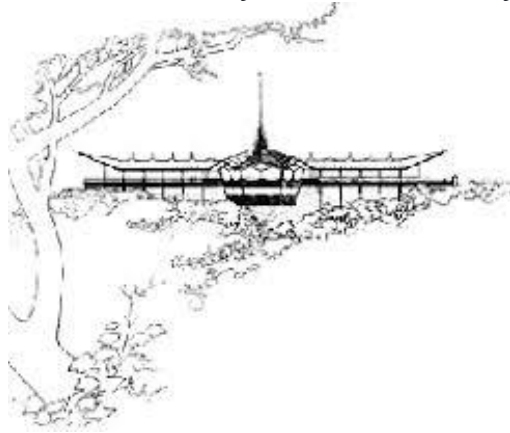
The War Years



Oklahoma



Carmel Valley and Monterey



Sandpoint

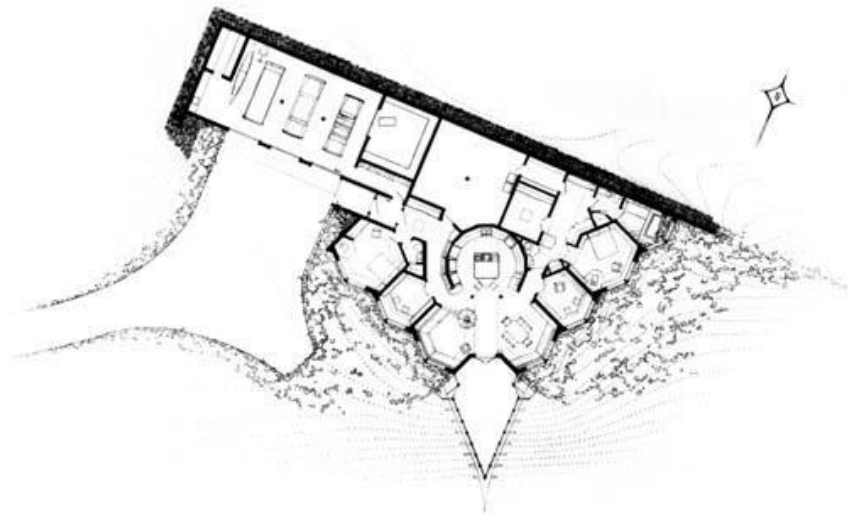


Joseph Henry Wythe in his Pack River home next to photo albums from his days as a World War II B-24 tail gunner. The black-and-white photograph in the foreground is Wythe during the war. "It was not a good war, just a just war," said Wythe, who has since become a Quaker. (Photo by LEE HUGHES)

https://www.bonnercountydailybee.com/news/local/article_e84ef03e-01c0-11e5-ac9d-43a47f1c5e28.html



UNICORN FARM The studios of Alternative Architecture



bibliography

https://www.bonnercountydailybee.com/news/local/article_e84ef03e-01c0-11e5-ac9d-43a47f1c5e28.html

<https://sandpointmagazine.com/story/sages-of-sandpoint/>

https://www.google.com/search?q=Joseph+Henry+Wythe&client=pub-5090005701884356&domains=GreatBuildings.com;artifice.com;DesignCommunity.com;ArchitectureWeek.com;RenderCity.com;DesignLaboratory.com;PetitionOnline.com;Archiplanet.org&channel=4432003626&hl=en&oe=ISO-8859-1&xsrf=ACYBGNTYp7T38loMDAsHjVIhAI78L_Ib_aA:1570820856343&tbm=isch&source=iu&ictx=1&fir=y5FPvdyNCU1Q7M%253A%252C8nFFgO0_AKJbbM%252C_&vet=1&usq=AI4_-kQV-P6DWgv06rmFCu0eb2cvd_Y7AA&sa=X&ved=2a_hUKEwjNkjZ85TlAhUKiqwKHU4CCIgQ9QEwAXoECAkQBg#imgsrc=zIYg75bQLahWEM:&vet=1

<http://www.alternative-architect.com/index.html>

<https://friendsofkebyar.com>

<https://www.amazon.com/Drawings-Alternative-Architecture-Folios-Joseph/dp/0966190947>

<https://friendsofkebyar.com/products/volume-16-1-number-63-1998>



